



Long Shot of Both Lots



RV Building



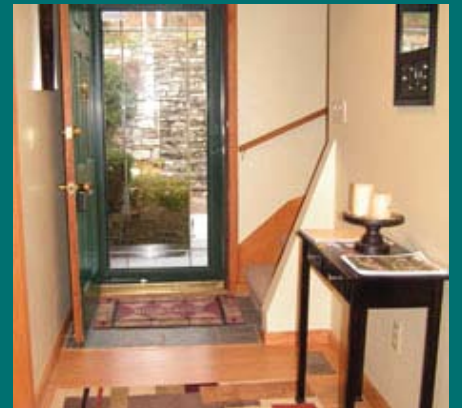
Front View



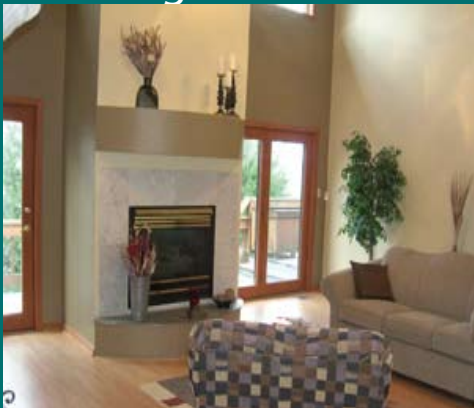
Flag & Rock Wall



Garden & Rock Walls



Foyer



Great Room Fireplace



Great Room Overview



Kitchen View



Appliances



Breakfast Mtn. View



Freezer in Pantry

4300 Sq. Ft. 4 Bedrooms, 4 Baths, Great Room, Office/Formal Living Room,
Dining Room, Large Kitchen, Full Rear Deck, Gardens, & Mountain Views

Call 828.280.3090

www.RVAsheville.com



Dining Room



Office Or Living Room



Guest Room 1



Master Bedroom



Walk-In Closet



Master Bath



Hall Bath



Laundry



Guest Room 2



Guest Room 3



Upstairs Bath



1/3 of Recreation Area

Excellent Heat & Air Units, Automatic Generator, Gas Log Fireplaces, 3 Double

Call 828.280.3090

Garages, 2 Workshop/Storage Area, Gorgeous Rock Walls

www.RVAsheville.com



Exercise Room



4 Person Jacuzzi



Redwood Sauna



Lower Bath



The Long Deck



75 x 30 Ft. HVAC Shed



Shelving Everywhere



Room For Open Slides



Room For Tow Car



Power & Water Hookup



Air Line, Wash/Dry, Bath

Yes you can live in the mountains & store your RV in a heat & air insulated

building so you're always ready to hit the road!

.97 Acre with Beautiful Mountain Views. 1 mile from Interstates 40/26 Shopping, Food, Medical less than a mile away!

Call 828.280.3090

www.RVAsheville.com

